

Proposed Redistricting Update: PK-6

Presentation to School Board

March 8, 2016

Mr. Jeff S. Abt

Executive Director of Student and Administrative
Support Services

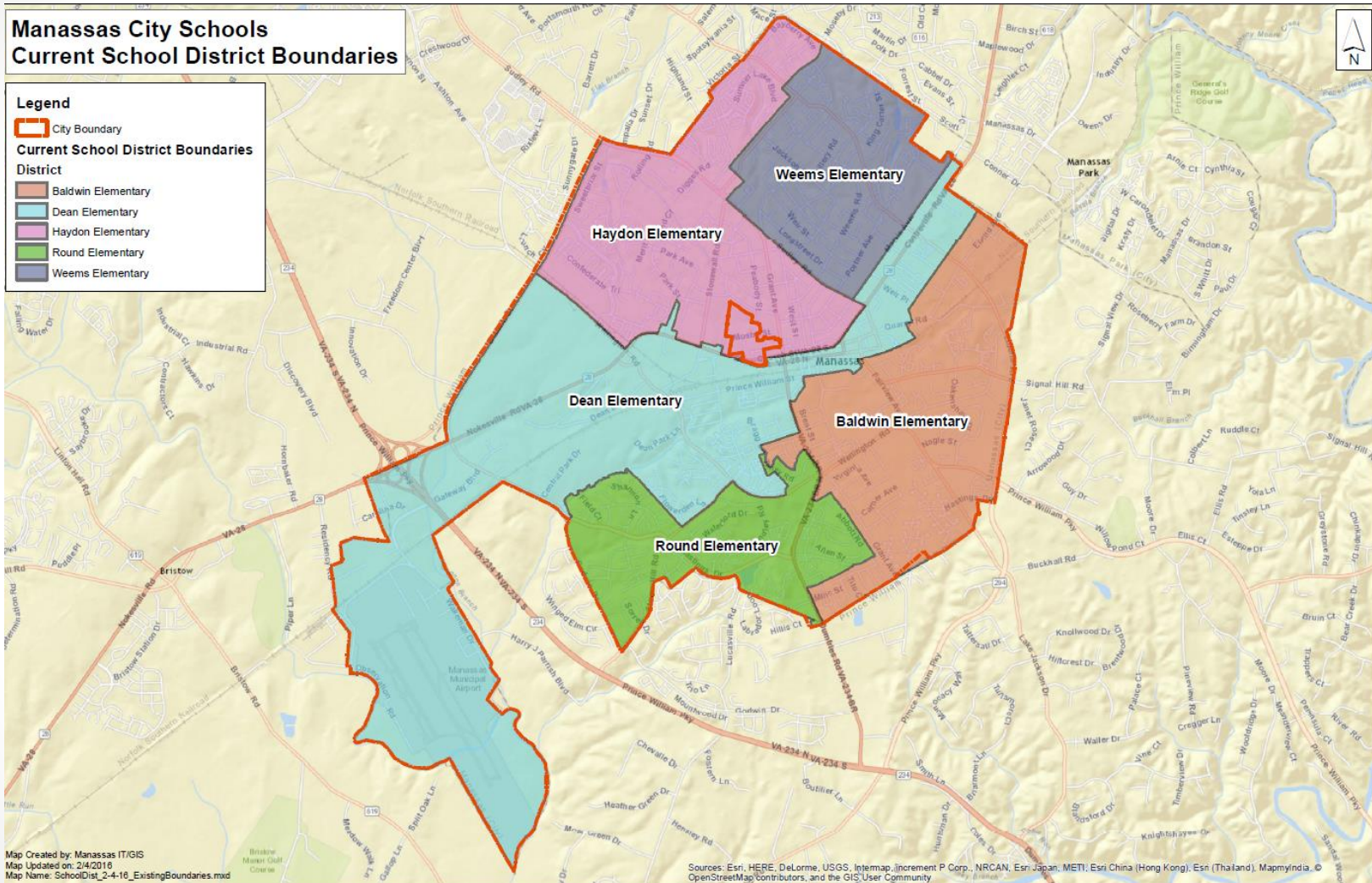
Background Information

- Phase I- New Baldwin Elementary and Intermediate
- Phase 2 – Redistricting and Planning for the Future
 - Contracted with Citygate GIS on April 8, 2015
 - Elementary/Intermediate Grade Configuration
 - 2020-2030 K-12 School Division Facilities Study
 - Elementary/Intermediate School Redistricting
 - PK-4 to begin August, 2016
 - Grade 5 to begin August 2017
 - Grade 6 to begin August 2018
- Phase 3 – School Year 2022
 - Proposed New Dean Intermediate and Mayfield Intermediate (grades 4-6)
 - Pre-K Center at current Baldwin Intermediate
 - 4 elementary schools (K-3)
 - Division-wide redistricting

Redistricting Goals

- Balance attendance areas with school capacities
- Account for future growth
- Keep neighborhoods together
- Student transportation efficiency
- Create a transparent and open process
- Include community input
- Eliminate trailers as homerooms
- Balance Free/Reduced lunch percentage at all schools

Current Boundaries -Elementary

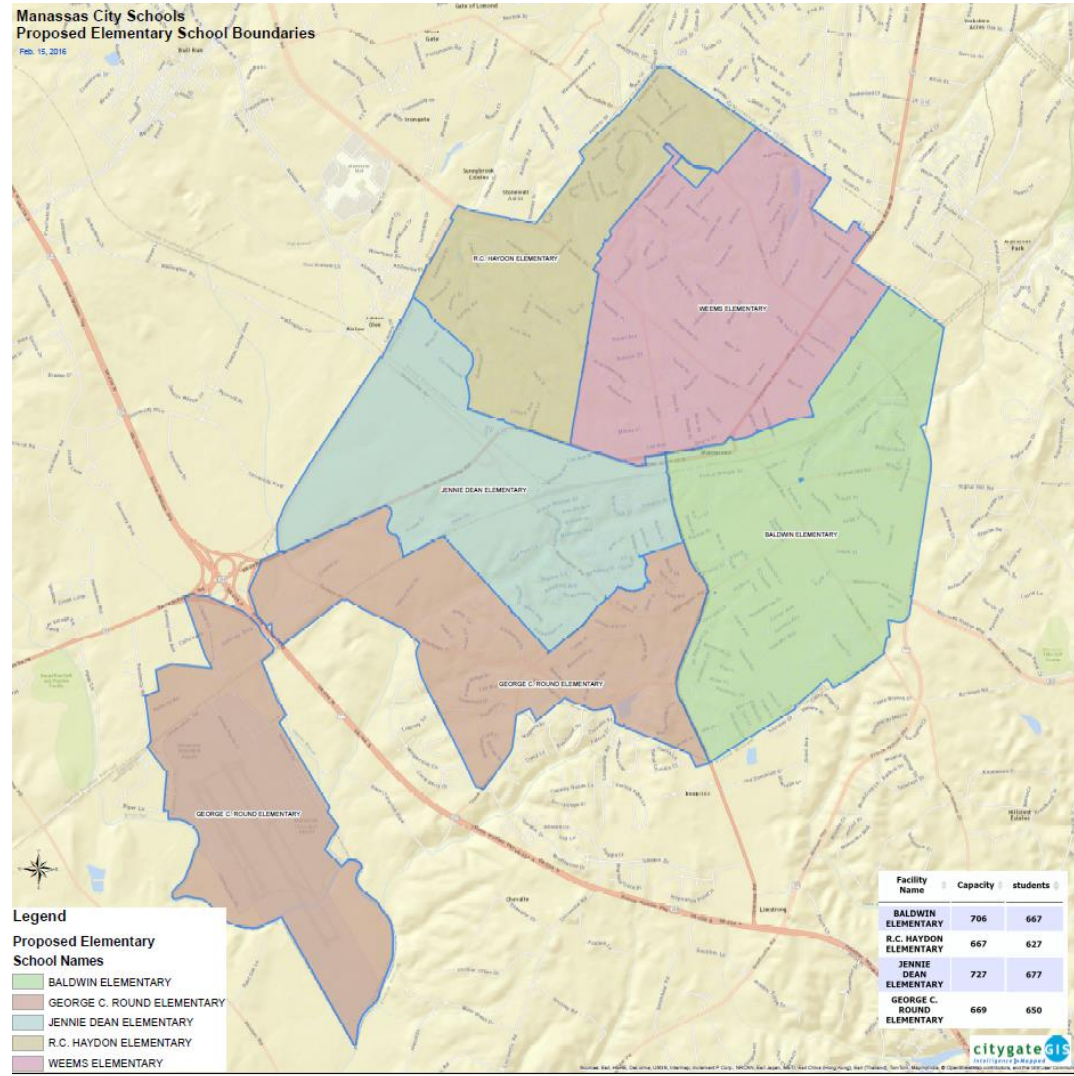


Current Student Count, Capacity, and Free/Reduced Percent

	Capacity	*Student Count	Free and Reduced By Address	Free and Reduced Current Students
Baldwin	706	757	70%	74%
Dean	727	665	67%	71%
Haydon	667	597	58%	64%
Round	669	507	49%	54%
Weems	713	763	62%	68%

*Based on student addresses reported in Power School

Proposed Plan "A" Boundaries -Elementary



Elementary Students Moving Under Current Redistricting Proposal Plan “A”

- *PK-4 Student Population based on current address – 3,289
 - Student transfers will be approved based on space available (JT-R)
- PK-3 Students Redistricted – 786
 - 76% staying at current school
 - 24% redistricted to different schools
- Division Special Education Classes (final program location may change based on needs of students and appropriate space)
 - 2 Autism– Haydon
 - 2 Autism, 2 Intellectual Disabilities (ID) – Round
 - 3 Pre-K - Dean

PK-4 Community Engagement Feedback

- Received 35 Comments from 16 addresses as of March 1, 2016
- Committee reviewed comments
- Committee revised Plan A into a Plan B for consideration

Plan A Changes for Plan B

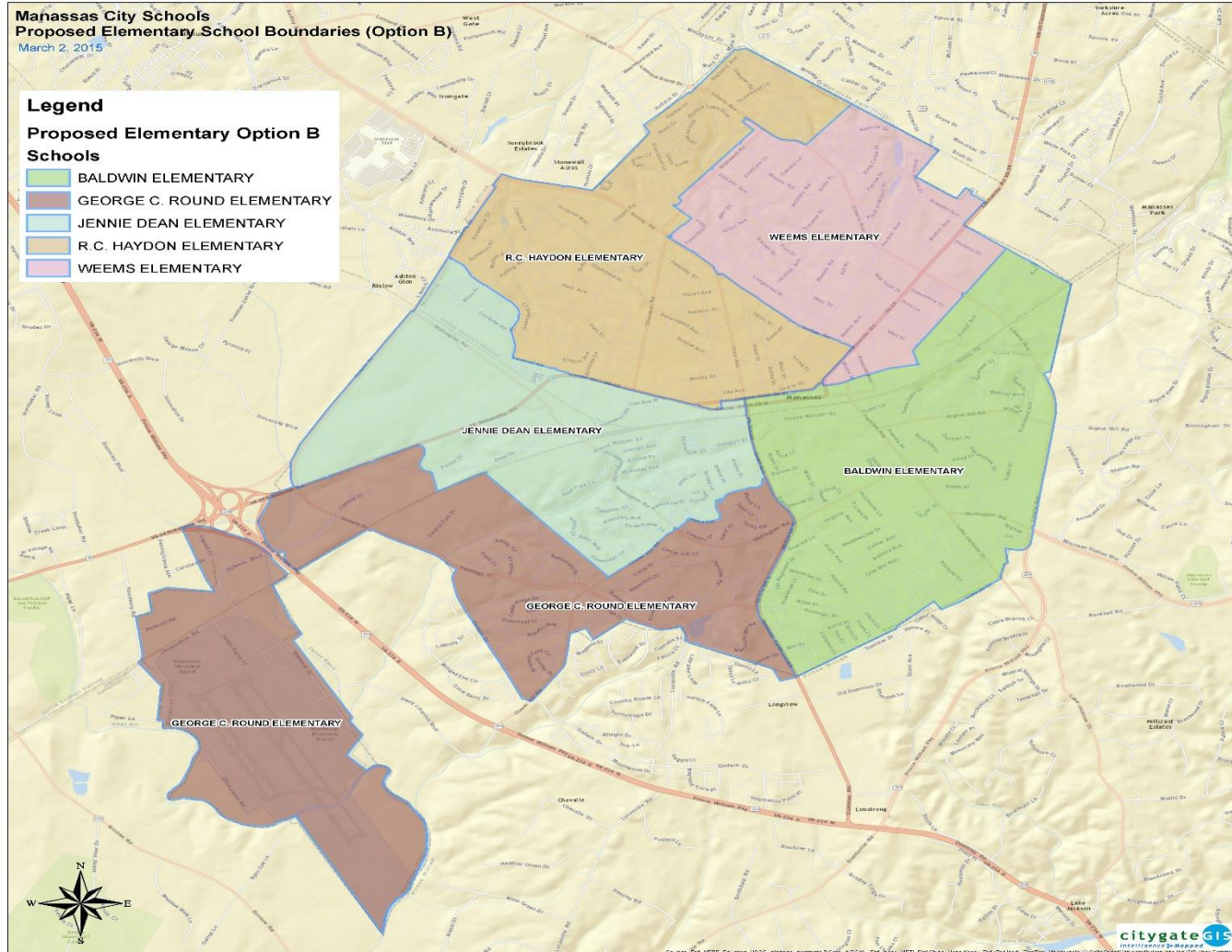
From Weems to Haydon:

- Change 1 – Stonewall, Peabody, Beauregard, Robnel Zone – Students live on Haydon side of Rt 234 and should not have been included in Weems district
- Change 2 – Battle and West Street Zone – Transportation safety with left turns off Sudley

From Haydon to Weems

- Change 3 – Piney Point/Willow Glen/Laurelwood Zone - Balance numbers
- From Baldwin and Round to Dean and Round
- Change 4 –Taney Road – Ease of transportation and balance numbers

Proposed Plan "B" Boundaries - Elementary



Comparison: “Plan A and B”

	Capacity	*Proposed Student Count		*Proposed Free and Reduced By Address		Free and Reduced By Students' Current School Assignment	Proposed Number of 3 rd Grade Students Transferred	
		A	B	A	B		A	B
Baldwin	706	667	667	60%	60%	74%	28	28
Dean	727	677	686	67%	68%	71%	37	37
Haydon	667	627	617	59%	58%	64%	45	31
Round	669	650	641	61%	60%	54%	20	12
Weems	713	674	680	64%	65%	68%	55	43
Division Total	3482	3295	3295				185	151

*Based on student addresses reported in Power School

Elementary Students Moving Under Current Redistricting Proposal Plan “B”

- *PK-4 Student Population based on current address – 3,289
 - Student transfers will be approved based on space available (JT-R)
- PK-3 Students Redistricted – 698
 - 76% Plan A vs.79% Plan B staying at current school
 - 24% Plan A vs.21% Plan B redistricted to different schools
- Division Special Education Classes (final program location may change based on needs of students and appropriate space)
 - 2 Autism– Haydon
 - 2 Autism, 2 Intellectual Disabilities (ID) – Round
 - 3 Pre-K - Dean

Comparison of Proposal “A” and “B”

Schools Receiving Students

Schools Sending Students

	BALDWIN		DEAN		HAYDON		ROUND		WEEMS		TOTAL Students Sent	
	Plan A	Plan B	Plan A	Plan B	Plan A	Plan B	Plan A	Plan B	Plan A	Plan B	Plan A	Plan B
Baldwin	-	-	1	17	0	0	120	103	2	2	123	122
Dean	17	17	-	-	11	12	55	57	96	95	179	181
Haydon	4	4	140	139	-	-	0	0	38	3	182	146
Round	67	67	19	10	7	7	-	-	7	7	100	91
Weems	3	3	1	1	197	153	1	1	-	-	202	158
Total Students Received	91	91	161	167	215	172	176	161	143	107	786	698

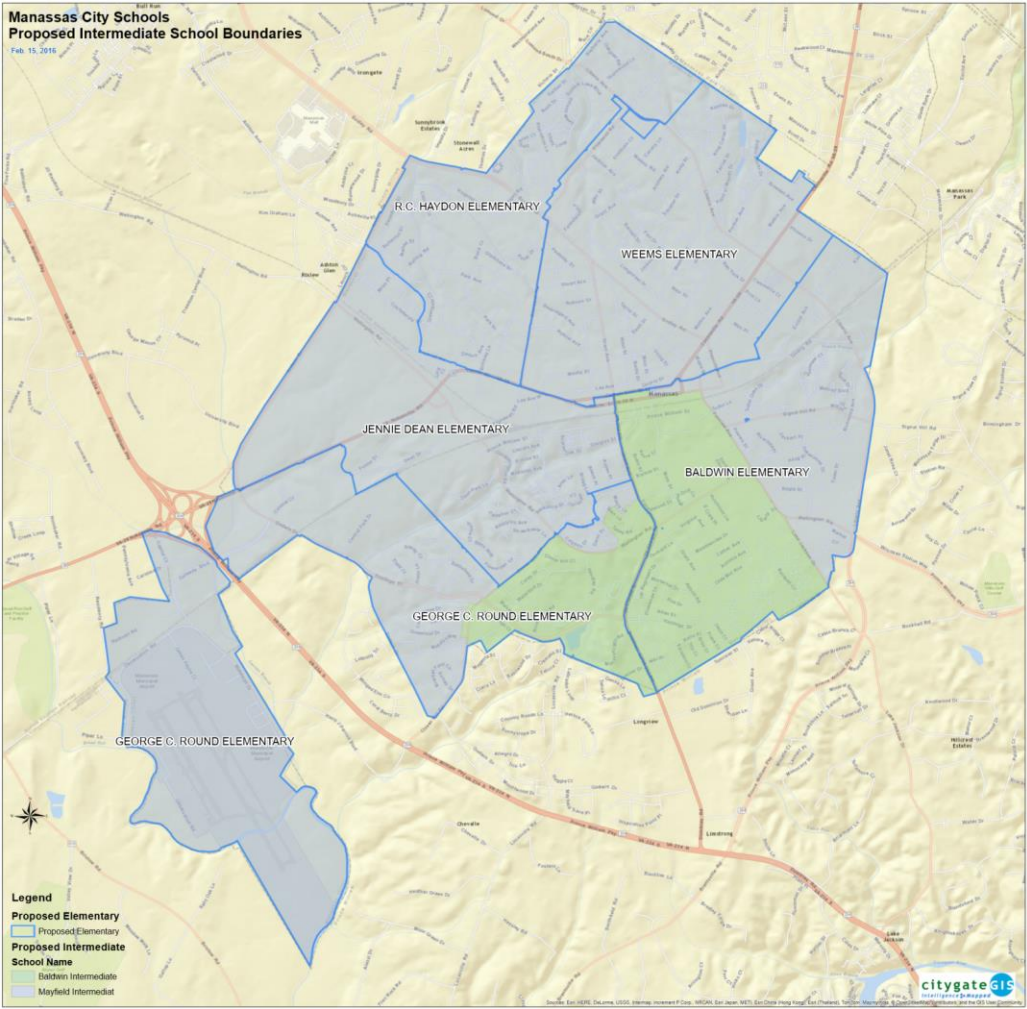
Other Comments: Elementary Redistricting

- Transfer Policy
- Special Education and 504 students
- Employee school assignments
- Crossing Major Roads

Intermediate (5-6) Community Feedback

- Received 1 Comment from 1 address
- No recommended changes at this time

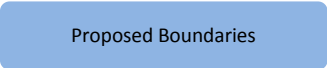
Proposed Boundaries - Intermediate



Legend



Proposed Elementary Boundaries



Proposed Boundaries



Baldwin Intermediate



Mayfield Intermediate

Intermediate Proposed Student Count, Capacity, and Free/Reduced Percent

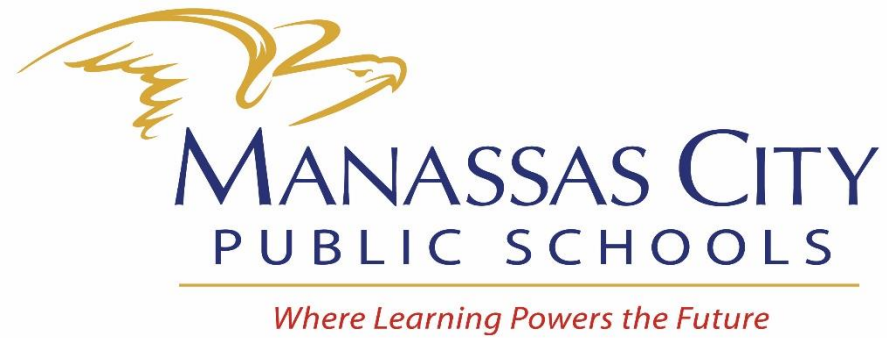
	*Student Count 2018	Capacity	*Free and Reduced By Address	Free and Reduced By Current Student Attendance
Mayfield	936	1,104	62%	61%
Baldwin	286	300	63%	NA
Division Total	1,222	1,404		

*According to addresses of proposed redistricted students in grades 2 and 3

Intermediate Transfers Based On Proposed Redistricting Plan

	*Baldwin Intermediate	*Mayfield Intermediate
Baldwin Elementary	162	79
Round Elementary	124	138

*Transfers based on proposed redistricted number of students in grades 2 and 3



Proposed Redistricting Update: PK-6

Presentation to School Board

March 8, 2016

Mr. Jeff S. Abt

Executive Director of Student and Administrative
Support Services